

358 people in communities near 3 wind farms (including Waterloo), distance unspecified.

70% support wind farms, only 11% opposed (18% no opinion) (interestingly, 34% say climate change is not a problem)

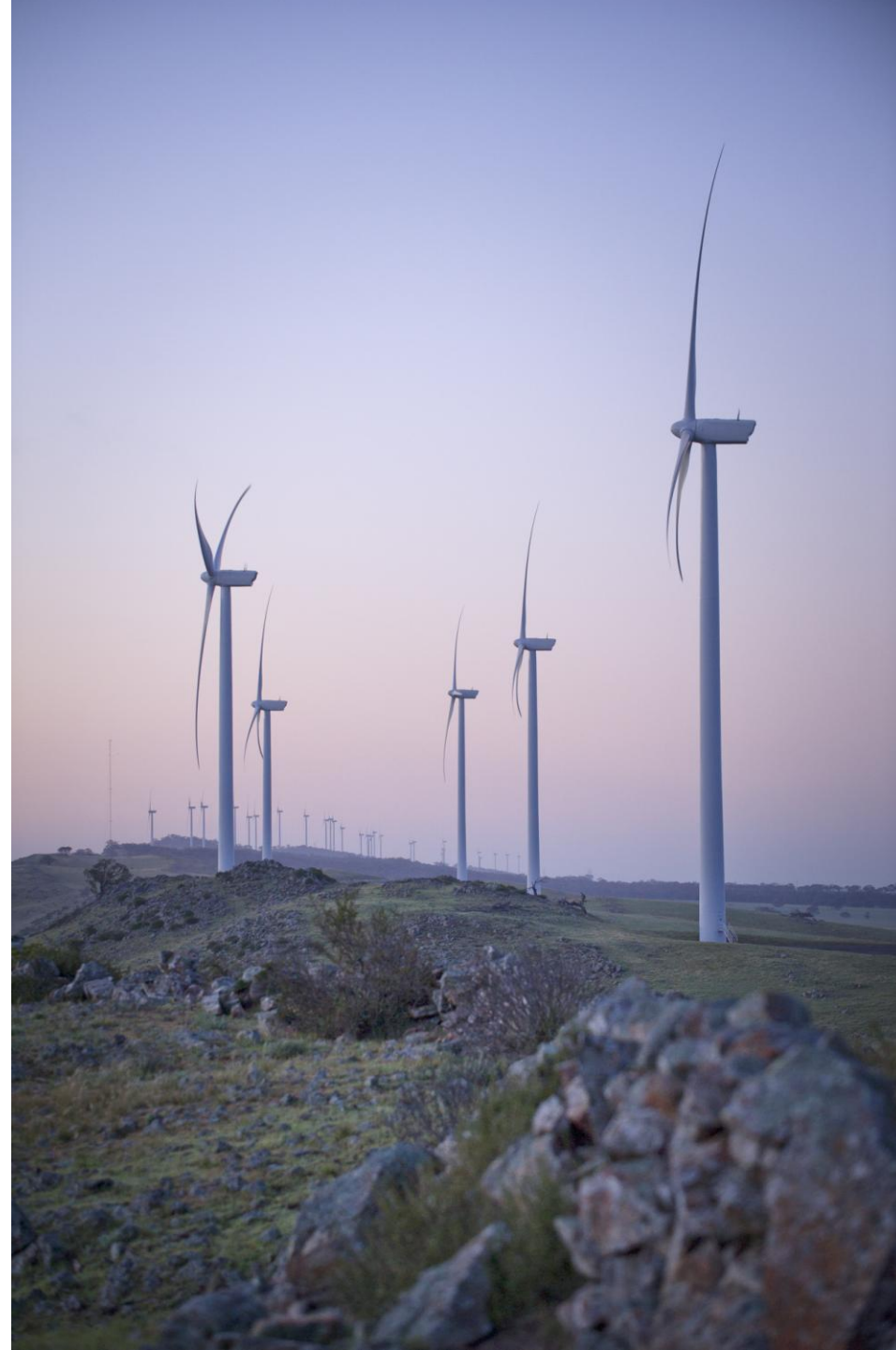
Yet also, 27% would not want a wind farm built on property near them (ie opposed and most of the no opinions)

25% say noise is an issue--the biggest negative attribute noted (far more than visual, which looks like 10%--and 35% say they like how they look)

(still most see several positive benefits, primarily economic)

TRUenergy Mid North Community Survey Summary

Feb 2012



Background

- TRUenergy regularly participates in conversations with the many hundreds of regional households and businesses that live and operate near our energy assets.
- Contact with these communities gives us a good understanding of local issues and needs.
- TRUenergy is now undertaking similar dialogue with the people of SA's Mid North region, home to our Waterloo wind farm.
- In March 2011, a formal research study by Roaring 40s* to help better understand the views, attitudes and perceptions of this particular local community.
- 358 Mid North residents were surveyed between 3-17 March 2011 via a telephone survey.
- This research was conducted by Qdos Research Pty Ltd, an independent research company with experience in qualitative opinion research.
- **This is a summary of those findings.**
- Research is now being used by TRUenergy to inform our community engagement, communications and stakeholder relations activities. Research will be updated periodically to ensure we stay abreast of current community opinion.

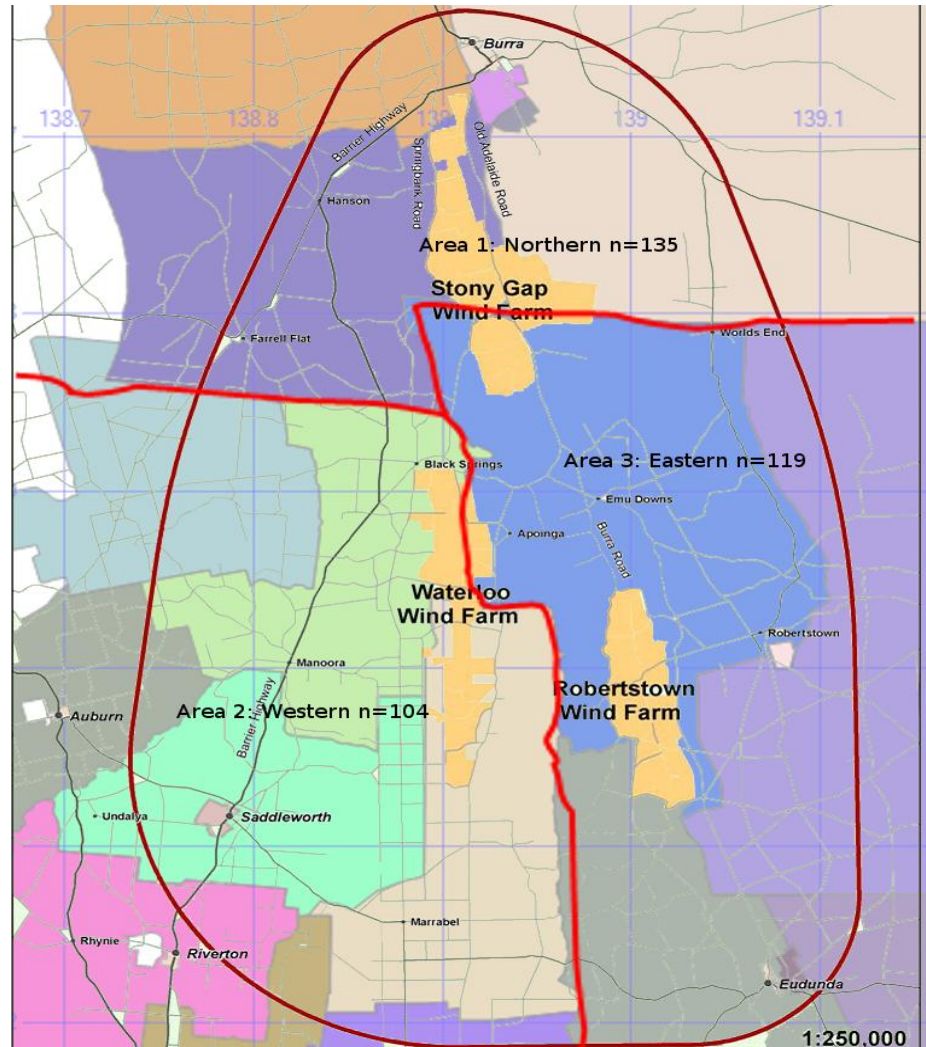


* TRUenergy took ownership of the Waterloo and Stony Gap projects on 1 July 2011 from Roaring 40s

Area surveyed

Residents of the following towns interviewed as part of the Mid North Community Survey were:

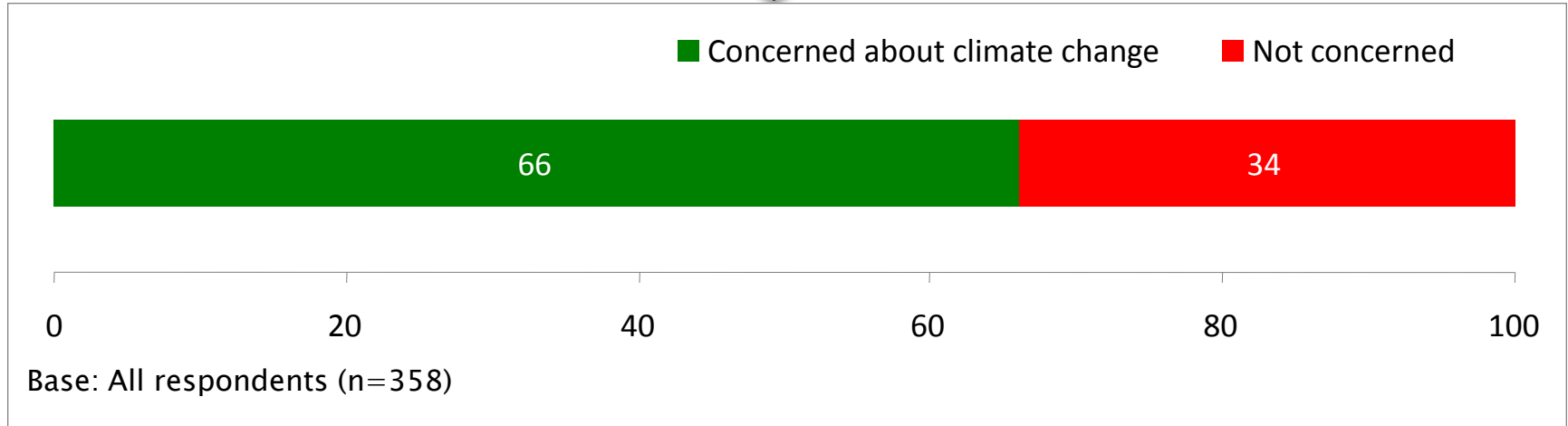
- Waterloo
- Burra
- Farrell Flat
- Worlds End
- Hanson
- Black Springs
- Emu Downs
- Aponinga
- Robertstown
- Manoora
- Saddleworth
- Eudunda
- Marrabel



Survey Results – Views on Climate Change

2 out of 3 Mid North residents were concerned about the environment...

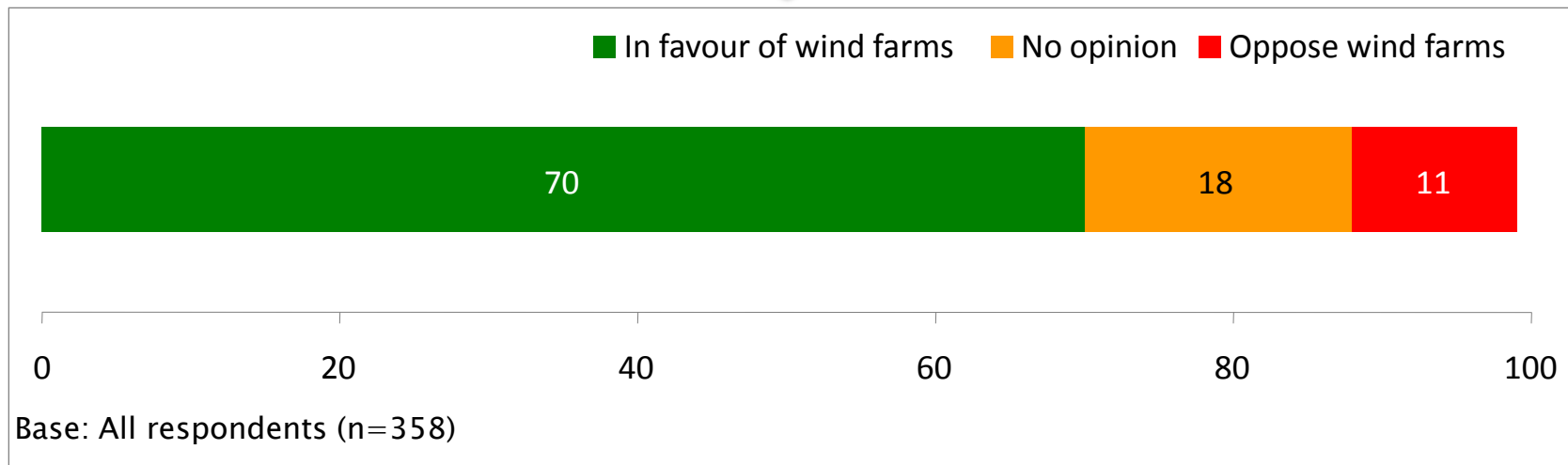
- 66% of mid north residents were concerned about climate change and global warming*
- Residents consider renewable energy a better option to combat climate change and reduce energy use rather than carbon treaties or a carbon price.*



Survey Results – Support for wind farms

The majority of Mid North residents surveyed support wind farms...

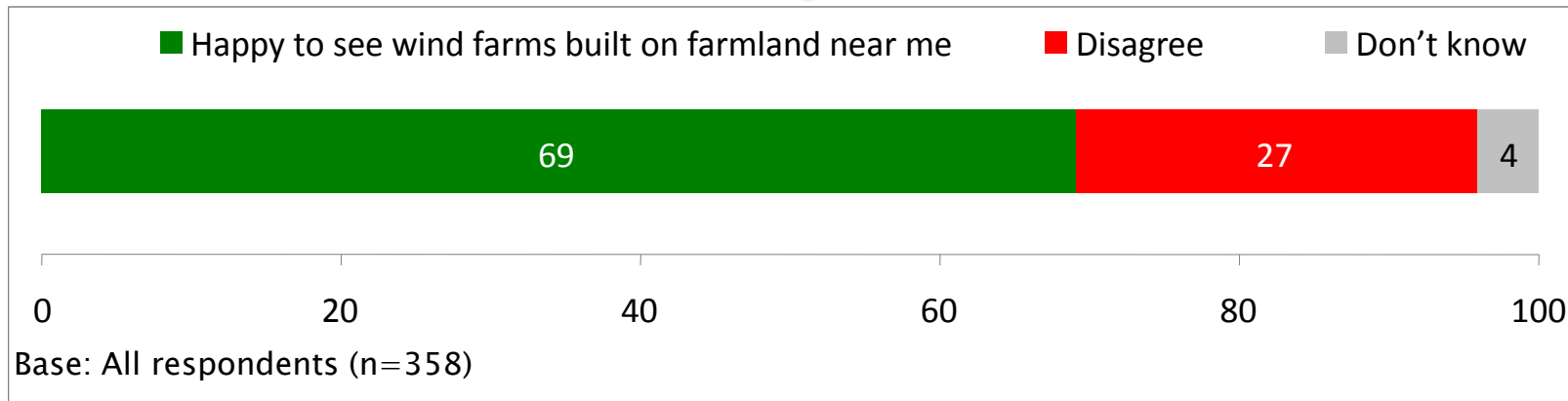
- 70% of residents surveyed supported wind farms, with 26% of responses being strongly in favour of them*
- In comparison, only 5% of survey residents strongly opposed wind farms*



Survey Results – Support for wind farms close by

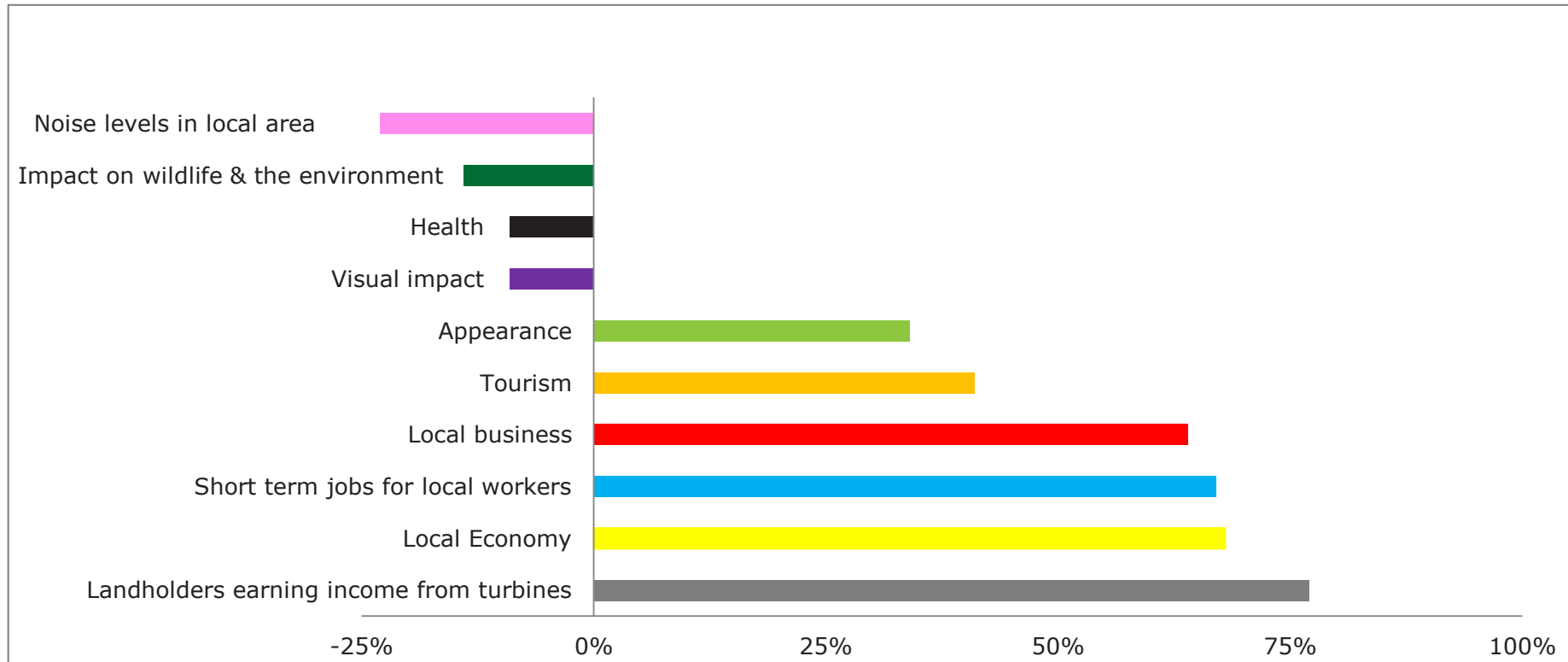
Mid North residents are happy with the idea of wind farms nearby...

- *69% of residents agree with the statement that they would be happy to see a wind farm built on farmland near where they lived.*
- *This level of support for local wind farms is similar to support shown for wind farms generally.*
- *87% of residents agree that the Mid North's wind levels and consistency make it a good place to generate wind energy*



Survey Results – Concerns about Wind Farms....

Noise levels and adverse impacts on wildlife and the environment are the most common concerns expressed by locals. Overall though, the perceived impact of wind farms on quality of life is seen as positive..



Contact TRUenergy

*For information about our wind farms or if you have any questions,
please contact us at talktous@truenergy.com.au*

Survey Results – Appendix A

Typical quotes from the survey...

Impacts to the community

"It will good for local economy - obviously people who are going to build wind farms will rent (land). It will mean money spent in the local area."

It's another form of energy and brings jobs to the district. There is an economic side of them putting them up and maintenance services which creates jobs."

Concerns raised by the community

We don't have any concern because it is not very close to me / the only thing I hear about is the noise

Only the people that worry about it/ the protest that was on - if the people were correct in what they said/ killing birds

Community information needs

"(It would be) Nice to know exactly how they work; how long they will be up there for."

"Are there any health risks Good studies about long term health risks."

Perceptions of the Roaring 40s

We don't have any concern because it is not very close to me / the only thing I hear about is the noise

Well there is been a lot of concern about the noise

About TRUenergy – Appendix B

TRUenergy is one of Australia's largest, integrated energy businesses, having grown steadily since we entered the Australian energy market in 1995.

We have experience in all aspects of energy generation, development and sales. Our portfolio includes:

- Australia's most efficient gas fired power station, the 420MW Tallawarra power station in Wollongong, NSW
- Hallett gas power station (180MW)
- Yallourn coal-fired power station (1480MW) and adjacent mine in the Latrobe Valley, VIC
- Iona gas storage facility near Port Campbell, VIC
- the Waterloo wind farm (111MW) near Clare, South Australia
- 50% share in Cathedral Rocks wind farm (66MW)
- a proposal to build a 180MW solar power station as part of the Australian Government's Solar Flagship Program
- a retail business that currently provides energy to over 2.8 million businesses and households across South East Australia.

As an investor, generator and retailer in Australia, TRUenergy recognises the importance of building a sustainable business. We were the first energy business in Australia to have a Climate Change Strategy with the goal of reducing our emissions by 60% by 2050. In addition, we are investing in new, clean energy projects in Australia including wind, gas and solar projects.

